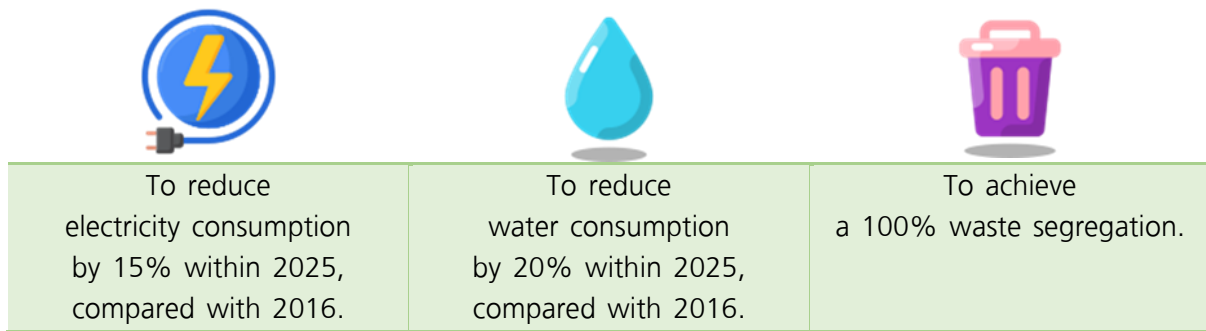


## ISO 14001:2015 ENVIRONMENTAL MANAGEMENT

In 2022, True Group has been certified according to the ISO 14001:2015 at 12 offices, cover 100% of office building, as follows ;

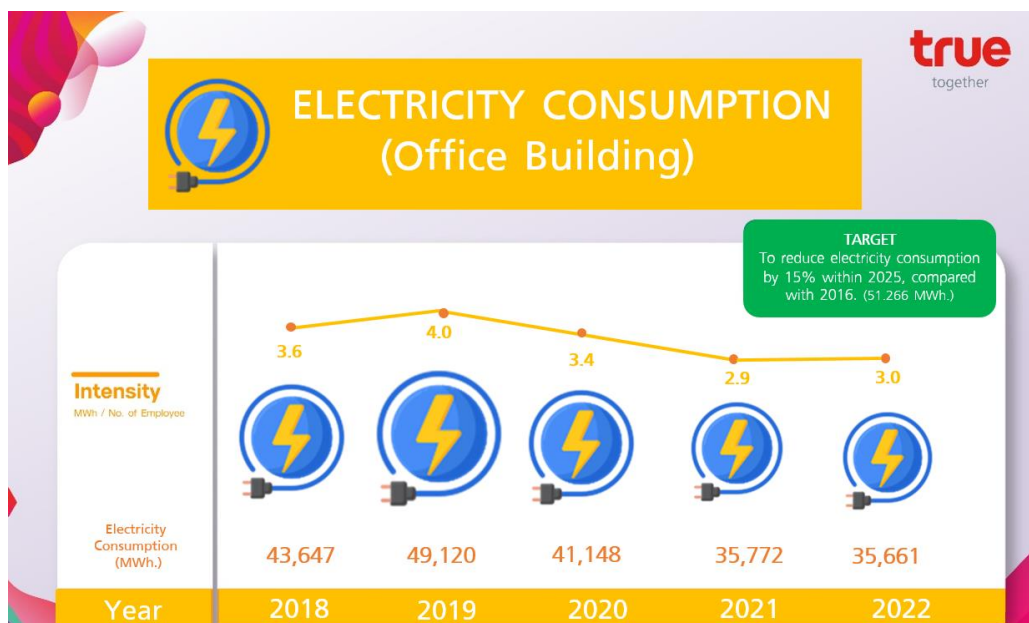
- True Tower
- True Tower 2
- True Digital Park Building
- Regional office Khon Kaen
- Regional office Nakhon Ratchasima
- Regional office Ubon Ratchathani
- Regional office Chiang Mai
- Regional office Phitsanulok
- Regional office Ayuttaya
- Regional office Nakhon Pathom
- Regional office Surat Thani
- Regional office Songkhla

True Group has set our goals for Environmental Management System (EMS) as follows;

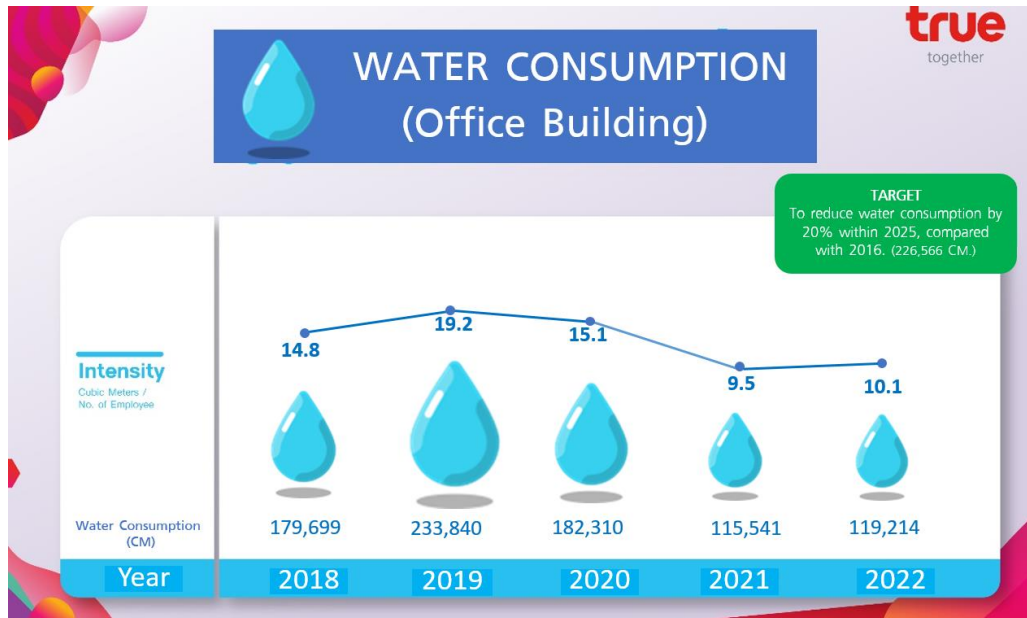


## SUMMARY PERFORMANCE

1. Electricity Consumption in 2022: Electricity Consumption (office building) was reduced by 30.43%, compared with 2016.



- Water Consumption in 2022: Water Consumption (office building) was reduced by 44.73%, compared with 2016.



- Waste Segregation: Achieve a 100% waste segregation at 12 office building,

TRUE ISO 14001:2015 CERTIFICATION

Certificate TH18/11079

The management system of

**True Corporation Public  
Company Limited**

True Tower 1: 18 True Tower, 15, 17-20, 23-26 Fl., Ratchadaphisek Rd., Hual Khwang, Bangkok 10310, Thailand

has been assessed and certified as meeting the requirements of

**ISO 14001:2015**

For the following activities

The Scope of Registration appears on page 2 of this certificate



This certificate is valid from 16 January 2023 until 05 January 2024 and remains valid subject to satisfactory surveillance audits.  
Issue 6. Certified since 17 May 2018  
Certified activities performed by additional sites are listed on subsequent pages.

Authorised by  
Jonathan Hall  
Global Head - Certification Services

SGS United Kingdom Ltd  
Rossmore Business Park, Ellesmere Port, Cheshire, CH65 3EN, UK  
t +44 (0)151 350-6666 - www.sgs.com



This document is an authentic electronic certificate for Client's business purposes use only. Printed version of the electronic certificate are permitted and will be considered as a copy. This document is issued by the Company subject to SGS General Conditions of certification services available on [Terms and Conditions](#) | SGS. Attention is drawn to the limitation of liability, indemnification and jurisdictional clauses contained therein. This document is copyright protected and any unauthorized alteration, forgery or falsification of the content or appearance of this document is unlawful.



Certificate TH18/11079, continued

# True Corporation Public Company Limited



ISO 14001:2015

Office - based operation for telecommunication services  
(mobile voice & data communication, broadband internet, cable television, development and supply of digital customized software, data processing)

True Tower 1:  
Office - based operation for telecommunication services  
(mobile voice & data communication, broadband internet, cable television)

True Tower 2:  
Office - based operation for telecommunication services  
(mobile voice & data communication, broadband internet, cable television)

True Digital Park:  
Office - based operation for telecommunication services  
(development and supply of digital customized software, data processing)

Regional Office Khon Kaen:  
Office - based operation for telecommunication services  
(mobile voice & data communication, broadband internet, cable television)

Regional Office Chiangmai:  
Office - based operation for telecommunication services  
(mobile voice & data communication, broadband internet, cable television)

Regional Office Nakhon Ratchasima:  
Office - based operation for telecommunication services  
(mobile voice & data communication, broadband internet, cable television)

Regional Office Ayutthaya:  
Office - based operation for telecommunication services  
(mobile voice & data communication, broadband internet, cable television)

Regional Office Phitsanulok:  
Office - based operation for telecommunication services  
(mobile voice & data communication, broadband internet, cable television)

Regional Office Nakhon Pathom:  
Office - based operation for telecommunication services  
(mobile voice & data communication, broadband internet, cable television)



This document is an authentic electronic certificate for Client business purposes use only. Printed version of the electronic certificate are permitted and will be considered as a copy. This document is issued by the Company subject to SGS General Conditions of certification services available on [Terms and Conditions](#) | SGS. Attention is drawn to the limitation of liability, indemnification and jurisdictional clauses contained therein. This document is copyright protected and any unauthorized alteration, forgery or falsification of the content or appearance of this document is unlawful.



Certificate TH18/11079, continued



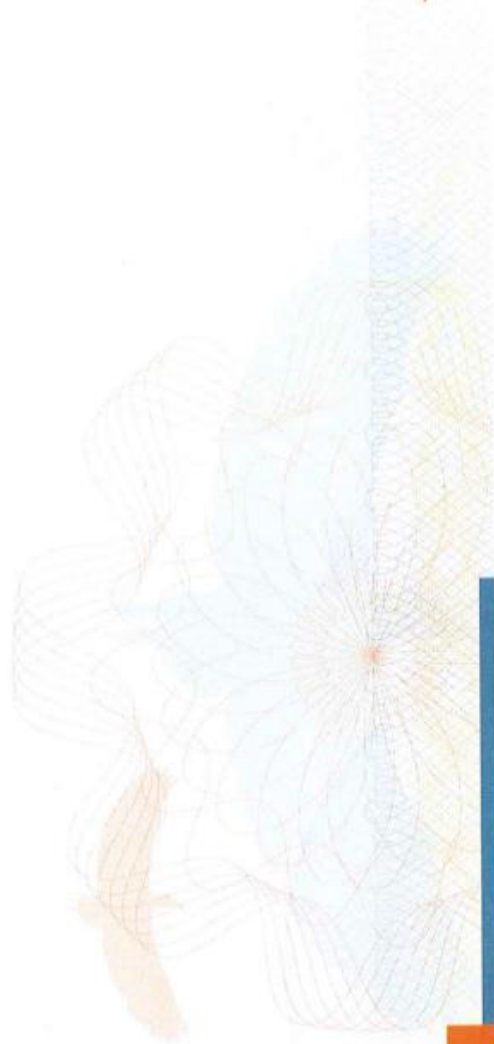
# True Corporation Public Company Limited

ISO 14001:2015

Regional Office Songkhla (Hat Yai):  
Office - based operation for telecommunication services  
(mobile voice & data communication, broadband internet, cable television)

Regional Office Surat Thani:  
Office - based operation for telecommunication services  
(mobile voice & data communication, broadband internet, cable television)

Regional Office Ubon Ratchathani:  
Office - based operation for telecommunication services  
(mobile voice & data communication, broadband internet, cable television)



This document is an authentic electronic certificate for Client' business purposes use only. Printed version of the electronic certificate are permitted and will be considered as a copy. This document is issued by the Company subject to SGS General Conditions of certification services available on [Terms and Conditions](#) | SGS. Attention is drawn to the limitation of liability, indemnification and jurisdictional clauses contained therein. This document is copyright protected and any unauthorized alteration, forgery or falsification of the content or appearance of this document is unlawful.



Certificate TH18/11079, continued



# True Corporation Public Company Limited

ISO 14001:2015

Issue 6
<b>Sites</b>
True Corporation Public Company Limited True Tower 1: 18 True Tower, 15, 17-20, 23-26 Fl., Ratchadaphisek Rd., Huai Khwang, Bangkok 10310, Thailand
True Corporation Public Company Limited True Tower 2: 1252, 1252/1 True Tower 2 Building, Phatthanakan Rd., Suan Luang, Suan Luang, Bangkok 10250, Thailand
True Corporation Public Company Limited True Digital Park: 101 True Digital Park, 6 Fl. Pegasus Building, 9-12 Fl. Griffin Building, Sukhumvit Rd., Bangchak, Phra Kanong, Bangkok 10260, Thailand
True Corporation Public Company Limited Regional Office Khon Kaen: 348 Moo. 16, C.P. Tower Khon Kaen Building 2, Maliwan Rd., Nai Muang, Muang, Khon Kaen 40000, Thailand
True Corporation Public Company Limited Regional Office Chiangmai: 144 Moo 1, San Klang, Sankampang, Chiang Mai 50130, Thailand
True Corporation Public Company Limited Regional Office Nakhon Ratchasima (Korat): 442 Mittraphap Rd., Muang, Nakhon Ratchasima 30000, Thailand
True Corporation Public Company Limited Regional Office Ayutthaya: 165/28-30 Moo 3, Asia Rd., Khlong Suanplu, Muang, Ayutthaya 13000, Thailand
True Corporation Public Company Limited Regional Office Phitsanulok: 100/1-4 Singhawat Rd., Ban Khlong, Muang, Phitsanulok 65000, Thailand
True Corporation Public Company Limited Regional Office Nakhon Pathom: 499/1 Petchkasem Road, Moo 1, Huai Chorakhe, Muang, Nakhon Pathom 7300, Thailand
True Corporation Public Company Limited Regional Office Songkhla (Hat Yai): 123/804 Naphalai Place Condominium, 5Fl., Ratyindee Rd., Hat Yai, Songkhla 90110, Thailand
True Corporation Public Company Limited Regional Office Surat Thani: 500/10 Icon Shopping Center Building Fl. 4, Muang, Surat Thani 84000, Thailand
True Corporation Public Company Limited Regional Office Ubon Ratchathani: 941/3 Ubon Square Fl. 3, Chayangkul Rd., Muang, Ubon Ratchathani 34000, Thailand



This document is an authentic electronic certificate for Client' business purposes use only. Printed version of the electronic certificate are permitted and will be considered as a copy. This document is issued by the Company subject to SGS General Conditions of certification services available on [Terms and Conditions](#) | SGS. Attention is drawn to the limitation of liability, indemnification and jurisdictional clauses contained therein. This document is copyright protected and any unauthorized alteration, forgery or fabrication of the content or appearance of this document is unlawful.



+++++